

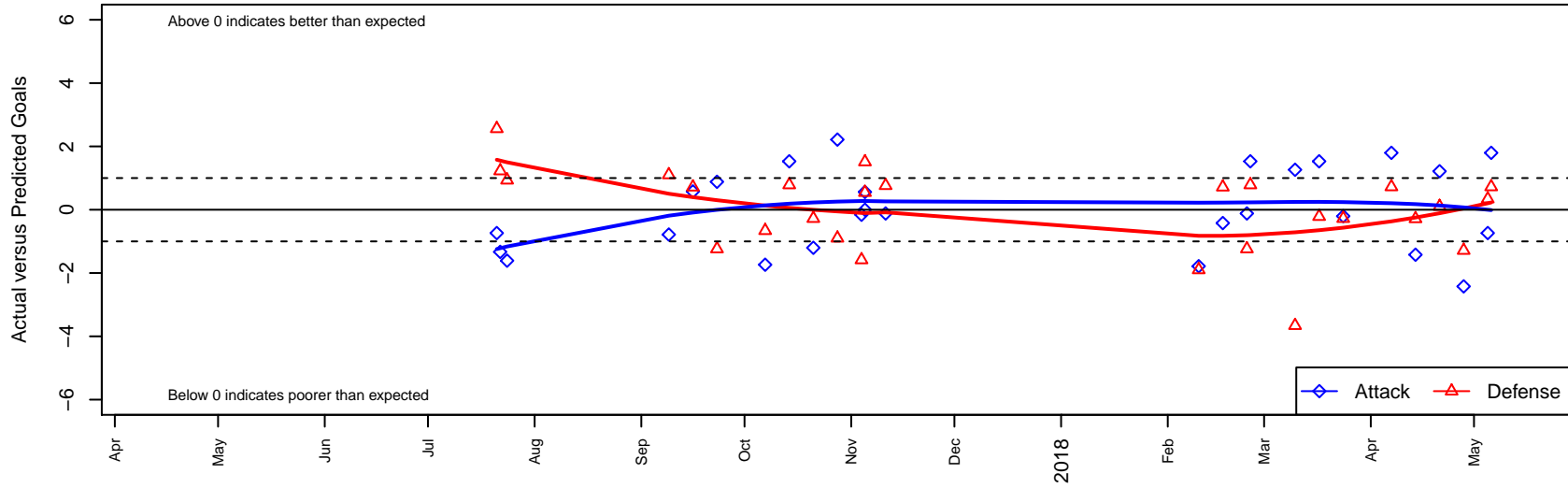
# Capital FC Timbers USSDA B04

Capital FC  
 Salem, OR  
 B04 total strength=1471  
 attack=11.5 defense=9.13  
 fall league = USSDA U14

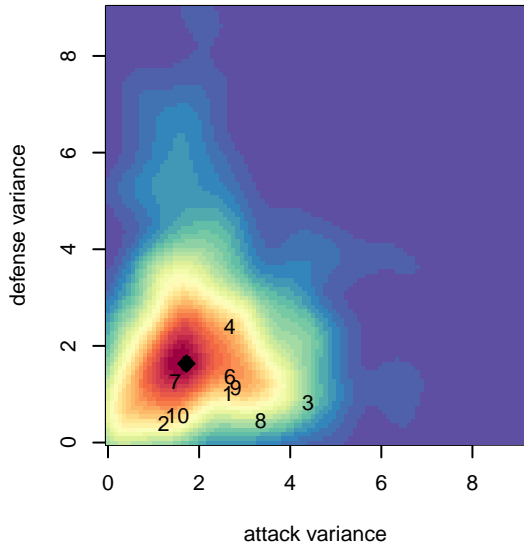
alt names used:  
 CAPITAL FUTBOL US SOCCER DEVELOPME  
 Capital FC Timbers U-14

Venues played:  
 2017 Nike Crossfire Challenge DA U14  
 2017 USSDA U14

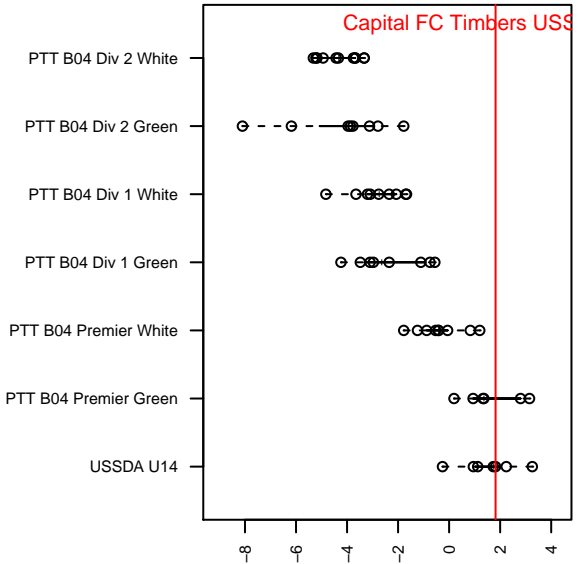
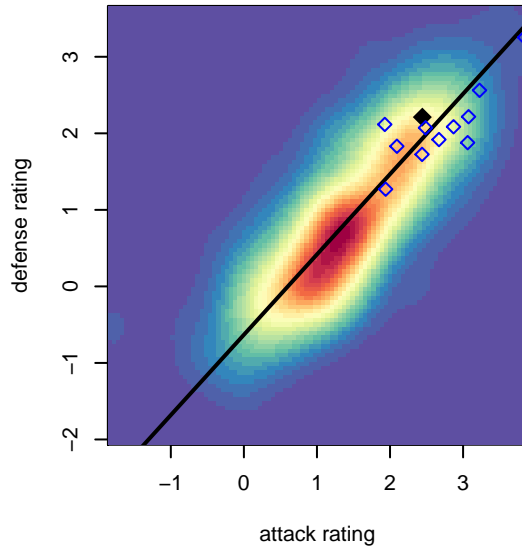
**Capital FC Timbers USSDA B04**  
 Dots are actual minus expected GF (blue circles) and GA (red triangles).  
 Blue line is smoothed change in attack strength. Red is smoothed change in defense strength.



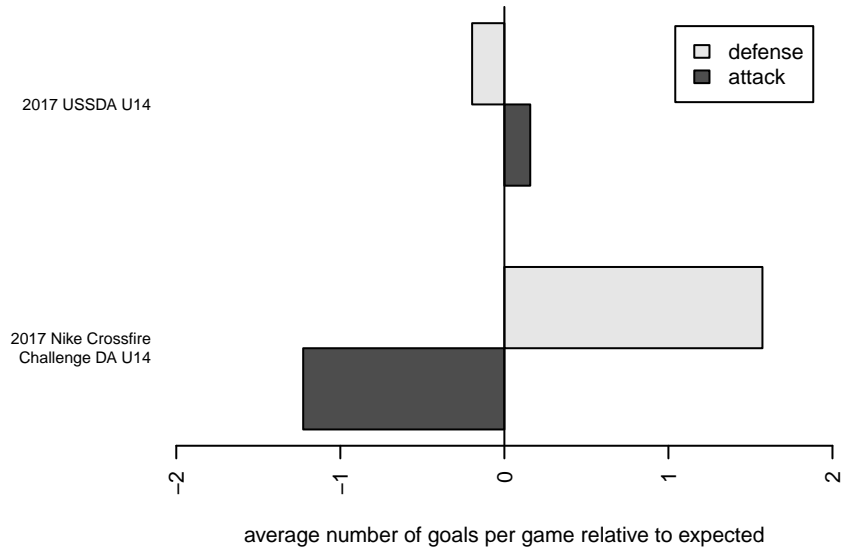
**attack and defense variance (black dot)  
relative to other teams  
and top 10 in region**



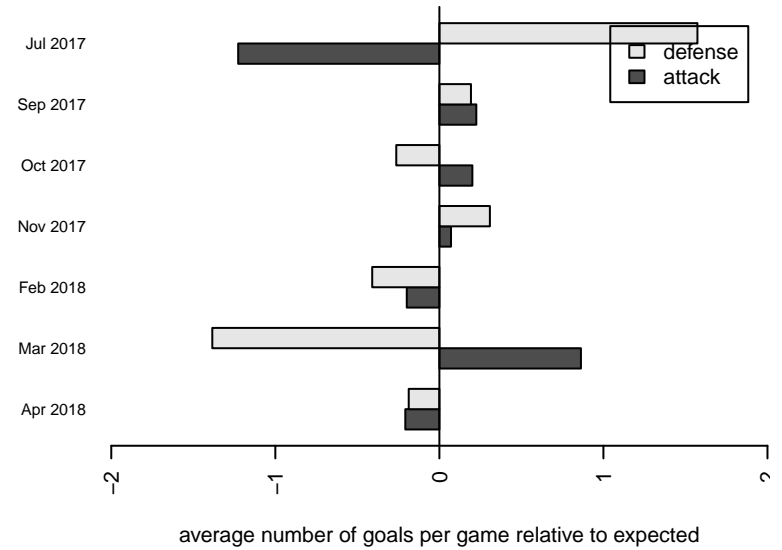
**attack and defense rating  
relative to others at age  
and all opponents in last 13 months**



**Performance relative to 13 month average**



**Performance relative to 13 month average**



<b>date</b>	<b>home</b>		<b>away</b>		<b>venue</b>	<b>pred.home</b>	<b>pred.away</b>
2018-05-06	Capital FC Timbers USSDA B04	3	Washington Timbers USSDA B04	1	2017 USSDA U14	1.20	1.72
2018-05-05	BSC OR USSDA B04	1	Capital FC Timbers USSDA B04	1	2017 USSDA U14	1.34	1.74
2018-04-28	Capital FC Timbers USSDA B04	1	Eastside Timbers USSDA B04	2	2017 USSDA U14	3.42	0.71
2018-04-21	FC Portland USSDA B04	1	Capital FC Timbers USSDA B04	3	2017 USSDA U14	1.10	1.78
2018-04-14	Eastside Timbers USSDA B04	1	Capital FC Timbers USSDA B04	2	2017 USSDA U14	0.71	3.42
2018-04-07	Washington Timbers USSDA B04	1	Capital FC Timbers USSDA B04	3	2017 USSDA U14	1.72	1.20
2018-03-24	Capital FC Timbers USSDA B04	1	Washington Timbers USSDA B04	2	2017 USSDA U14	1.20	1.72
2018-03-17	Capital FC Timbers USSDA B04	3	Westside Timbers USSDA B04	2	2017 USSDA U14	1.47	1.78
2018-03-10	BSC OR USSDA B04	5	Capital FC Timbers USSDA B04	3	2017 USSDA U14	1.34	1.74
2018-02-25	Capital FC Timbers USSDA B04	3	Westside Timbers USSDA B04	1	2017 USSDA U14	1.47	1.78
2018-02-24	Capital FC Timbers USSDA B04	1	Crossfire Oregon USSDA B04	2	2017 USSDA U14	1.12	0.76
2018-02-17	Eastside Timbers USSDA B04	0	Capital FC Timbers USSDA B04	3	2017 USSDA U14	0.71	3.42
2018-02-10	Capital FC Timbers USSDA B04	0	FC Portland USSDA B04	3	2017 USSDA U14	1.78	1.10
2017-11-11	Capital FC Timbers USSDA B04	1	Crossfire Oregon USSDA B04	0	2017 USSDA U14	1.12	0.76
2017-11-05	FC Golden State USSDA B04	3	Capital FC Timbers USSDA B04	1	2017 USSDA U14	4.51	0.44
2017-11-05	Nomads SC USSDA B04	5	Capital FC Timbers USSDA B04	0	2017 USSDA U14	5.54	0.00
2017-11-04	Santa Cruz Breakers USSDA B04	4	Capital FC Timbers USSDA B04	1	2017 USSDA U14	2.42	1.16
2017-10-28	Capital FC Timbers USSDA B04	4	FC Portland USSDA B04	2	2017 USSDA U14	1.78	1.10
2017-10-21	Washington Timbers USSDA B04	2	Capital FC Timbers USSDA B04	0	2017 USSDA U14	1.72	1.20
2017-10-14	Westside Timbers USSDA B04	1	Capital FC Timbers USSDA B04	3	2017 USSDA U14	1.78	1.47
2017-10-07	Capital FC Timbers USSDA B04	0	BSC OR USSDA B04	2	2017 USSDA U14	1.74	1.34
2017-09-23	Crossfire Oregon USSDA B04	2	Capital FC Timbers USSDA B04	2	2017 USSDA U14	0.76	1.12
2017-09-16	Capital FC Timbers USSDA B04	4	Eastside Timbers USSDA B04	0	2017 USSDA U14	3.42	0.71
2017-09-09	FC Portland USSDA B04	0	Capital FC Timbers USSDA B04	1	2017 USSDA U14	1.10	1.78
2017-07-24	Capital FC Timbers USSDA B04	0	Snohomish United USSDA B04	0	2017 Nike Crossfire Challenge DA U14	1.61	0.93
2017-07-22	Capital FC Timbers USSDA B04	0	WPFC USSDA B04	0	2017 Nike Crossfire Challenge DA U14	1.33	1.23
2017-07-21	Crossfire Premier USSDA B04	0	Capital FC Timbers USSDA B04	0	2017 Nike Crossfire Challenge DA U14	2.56	0.74